

NORMANDE PROOFS RELEASE

Evolution International's Normande : the dairy cow that provides to farmers the highest added value of milk and meat, autonomy, and secured incomes.

« NORMANDE EVOLUTION RANKS THE TOP 5 ! »

For December 2018, Evolution offers you an amazing bulls selection of latest new genetics as well as highly proven bulls. According to your priorities you will find easily top bulls to provide exceptional protein and fat contents, strong quantity of milk, additional beef value along with natural health traits of the breed. Evolution selects the best of Normande genetics, ranking 100 % of the TOP 5 ISU. Discover hereby some of the best opportunities.

TOTAL RANKING

N°1 : NAVIDAD (sexed only on order)

TOP 5 : 100 % Evolution

TOP 100 : 70 % Evolution

TOP OPTI^{LIB}

TOP 5 NEWYORK Sexed
GAME OVER
TOP 5 MONTFORT
LIMA

TOP CONFORT^{LIB}

NEWGEN
NEYMAR
LOSANGELES

TOP QUALI^{LIB}

TOP 5 MANCHESTER
NOSTRADAM

TOP OPTI^{LIB} NEWYORK Sexed, SUPERB milk production and top ISU 168



New internationally available bull, NEWYORK (AB, A2A2), 3rd in Ranking of the Normande breed. Available only in sexed semen.

NEWYORK is very well-balanced high milk production 970 kg with interesting value protein +0.14% & fat +0.05%, type +1.7, udder +1.9, feet and legs +1.3, health +1.1. A bull really adapted for high production system grazing or intensive conditions.

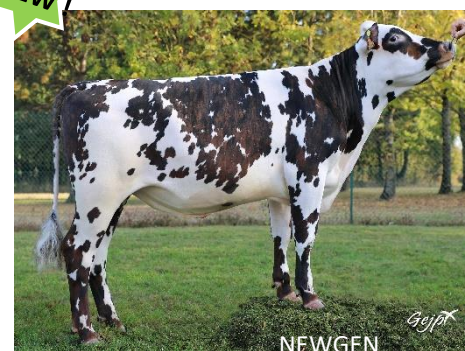
Other advantages : Easy Calvings Bull, healthy udder

TOP CONFORT^{LIB} NEWGEN, a COMPLETE bull

New available bull, NEWGEN (BB, A2A2) is the solution to improve health.

He brings good type +1.3 with very nice and healthy udder +1.5, feet and legs +0.9 with very good feet angle +1.2 and locomotion +1. All of this is associated with a good production level and protein +0.18%. He is a top bull adapted for intensive dairy conditions as well as full grazing system.

Other advantages : Calving Ease Bull, Somatic Cells Score, Clinical Mastitis



TOP QUALI^{LIB} MANCHESTER confirms his leadership to get the HIGHEST MILK VALUE



MANCHESTER (BB, A1A2) represents one of the best genetics to bring high milk value through protein +0.16% & fat +0.38% with interesting milk production. MANCHESTER brings a perfect strength and overall type either for its nice and healthy udder +1.1 and very sound feet & legs +1.3.

A bull really adapted to produce top milk for cheese !

A strong dam family, the same dam than the N°1 ISU NAVIDAD.

Other advantages : Ketosis, Mastitis

OPTI LIB



LIMA (BB, A2A2), a high milk producer !

LIMA brings high milk production +901 kg with favorable proteins & fat +0.14%, nice and healthy udder with strong udder attachment.

Bull really appropriate to intensive systems bringing high milk production combined with Normande milk qualities.

Other advantages : Available SEXED semen, Easy Calvings Bull, Rear Leg set, Good temperament.



★★★ Still on the TOP ! ★★★

High milk producers with very good feet & legs and high meat value.

The bulls bring health udder, health and longevity.



GAME OVER (AB, A2A2)

+ Easy Calving + Reproduction
+ Fertile + Sexed Semen

MONTFORT (BB, A2A2)

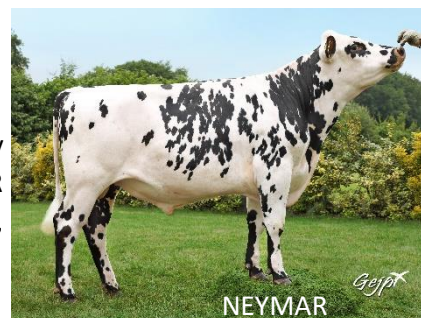
+ Milking Speed + Udder
+ Type + Outstanding dam family

CONFORT LIB

NEYMAR (AB, A2A2), confirms its universal FITNESS

NEYMAR represents one of the best genetic combination to bring absolutely healthy feet and legs +1.5 with strong hooves and easy locomotion. NEYMAR is perfectly recommended for high grazing system with his moderate height, strong rumps, high reproduction and easy calvings.

Other advantages : Available in SEXED semen, Protein, Milk, Frame



LOSANGELES (BB, A2A2), AMAZING frame & healthy udder

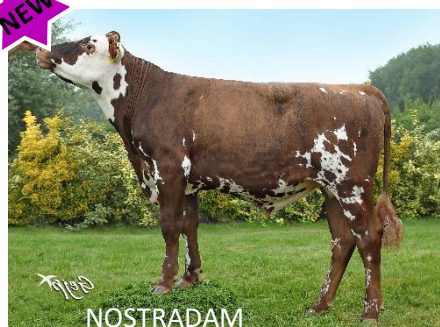
LOSANGELES provides a top frame +1.8 with an absolutely nice and healthy udder +1.4 and an easy calving. He produces a good quantity of milk with a lot of protein +0.19 %. LOSANGELES bring the genetic strength of his dam family.

Other advantages : Available in SEXED semen, Feet & Legs, Type, Health



QUALI LIB

NEW !



NOSTRADAM (AB, A2A2), the ultimate DUAL-PURPOSE bull

NOSTRADAM is the N°1 in type. He represents one of the best bulls in overall beef value +2.0 ! He brings also very good feet and legs +1.7, beautiful and healthy udder +1.8 and easy calvings.

NOSTRADAM is fully adapted to systems looking for high quality of meat with also milk production.

Other advantages : Available in SEXED semen, Frame, Health, Longevity

INTERNATIONAL SUCCESSFUL BREEDERS WITH EVOLUTION'S NORMANDE GENETICS

1- CHILE – 450 COWS - Crossbreeding with Normande



Bulls choice based on :

- Intensive grazing
- High production with components

7800 L/cow 4.1% Fat 3.54% Protein

- Good Feet and Legs
- Healthy Udders



CHILE – Marcelo DROPELMANN

Localised in Los Lagos, Marcelo DROPELMANN manage a herd of 450 cows on 220 hectares so a load of 5 cows/hectares. He is looking for feeding almost with grass all the year, searching for the best valorization of grass and autonomy. To achieve his goals of feeding Marcelo crossed all his cows, Montbeliarde and Holstein, with top Evolution Normande bulls. He used especially Game Over, LosAngeles and Jitan. He chooses his bulls for high milk production with healthy udder, good feet and legs, and the kappa casein BB.

What he is thinking about Normande cows : « *The normande cow is very strongh, has almost no problems during calvings or in milking parlour* ». « *She is very docile and has a dairy persistence* ». « *Her milk production has a good reactivity to the quantity of grass* ». « *I am really satisfy of the breed Normande for my system*».

Additionally, Normande calves are sold twice the price of Holstein's.

Production key numbers :

- 450** crossbred cows with Normande
- 220** hectares
- Age at 1st AI = 15 months
- Number of AI= 1.6
- Age at calving = 24 months

2. UNITED KINGDOM – 120 COWS – Absorption with Normande



UNITED KINGDOM – John FINDLAY

John FINDLAY used to manage a herd of Holstein cows up to he decided to have cows with more hardiness. He choose the Normande breed and introduced it by absorption. Now, he is at the eighth generation. Recently,he used especially Game Over with high satisfaction.

« *Normande converts grass to milk with high components and staying strong despite of their environment* »

« *They are strong cows, able to graze and keep good health* »

Key Numbers :

120 cows pure Normande (8th generation by absorption)

6 400 L /cow

TB = 45.4 TP = 35.3