

GENETIC EFFICIENCY

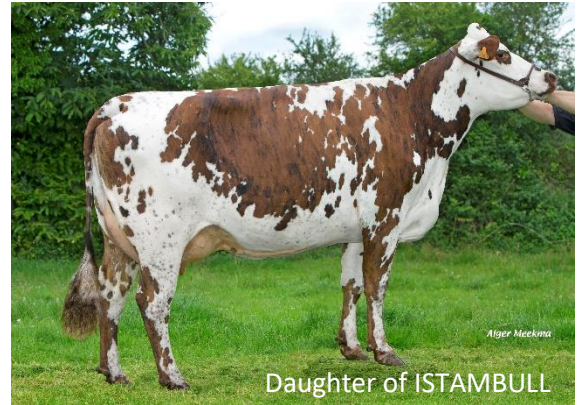


NORMANDE PROOF RELEASE

Evolution International's Normande : the dairy cow that provides to farmers the highest added value of milk and meat, autonomy, and secured incomes.

TOP NEWS from August proof :

- New success of Evolution genetics : **TOP 6** for Evolution ! **17** Evolution bulls in **TOP 20** !!
- TOP ISU : JEONIX (169), ORFEVRE (167), NEWYORK (166), OSORNO (165) and NAVIDAD (164)
- TOP Proven bulls : GAME OVER (151), ISTAMBULL (151) and IGANTO (150)
- New Proven Calving Ease bulls (>90) NAVIDAD (164), MONTFORT (162) and MANCHESTER (160)



The Normande is a breed with a high grazing ability. To maximize this advantage, a new class of bulls has been created. The highest adaptability to grazing systems, moderate size and good health are focused.

The class of bulls **CONFORT** becomes **GRAZING +**



Focus on GRAZING + cow :

“ A cow with **moderate frame** and **excellent Feet & Legs**. She has to valorize the pasture at the maximum. She breaths **a good health** and **welfare**. She is **fertile** and get a **short calving interval**.”

Medium Stature

Easy Calvings

Health + Fertility

Health Udder and production balanced

Feet & Legs



GRAZING + Bulls :

NEWYORK (ISU 166) : Ketosis +1.3

NAVIDAD (ISU 164) : Breeding : + 0.7

NEW ONLY VAL (ISU 161) : Health Udder + 1.6

NEW OPTI NOZ (ISU 148) : Easy Calving 93

PROVEN GAME OVER (ISU 151) : Feet & Legs + 1.8

QUALI :

OPEN VAL : The opening towards milk and beef qualities (ISU 157, BB, A2A2)

OPEN VAL is the dual-purpose bull : +751 kg in milk, +0.17% Proteins and beef value at +1.1 ! An expert in Feet & Legs +2 with an exceptional Locomotion +2.3. He brings well attached udder with a strong support.

Available in SEXED and CONVENTIONAL semen. **+37€/1 000 L**



MANCHESTER : The milk added value bull (ISU 160, BB, A1A2)

Manchester represents one of the best sire to bring high milk value through protein +0.15% & fat +0.34% with interesting milk production. He brings strength and overall type either for its nice and healthy udder +1.2 and very sound feet & legs +1.4. Calving Ease 92.

+47€/1 000 L



OPTI :

JIBRALTAR : The top proven DAIRY bull (ISU 144, AB, A2A2)

JIBRALTAR confirms as a dairy bull +964 kg with solids Fat +0.02% and Proteins +0.03%. He brings also udders with strong attachments +1.9 and well-balanced. Daughters have straight back +1.2 and a good breeding +0.8., cows fertility +1 and heifers fertility +0.7. Easy calving at 92.

+385€/Lactation



ORAN : Full brother of ORFEVRE (ISU 148, BB, A2A2)

ORAN brings milk in quantity +884 kg and quality Fat 0.05% and Proteins +0.07%. He gives a top Type +1.2 with beautiful well balanced udder +1.8. Daughters will have a speed milking +0.5. Easy calving at 90.

+376€/Lactation



GRAZING + :

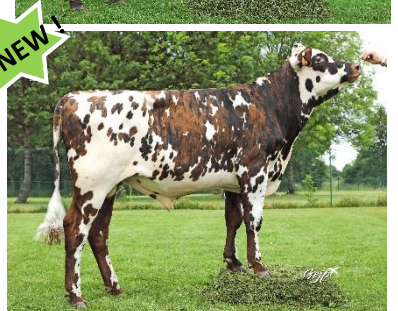
OPTI NOZ: The best combination Milk + Health + Repro (ISU 145, BB, A2A2)

OPTI NOZ is a dairy bull +768 kg with solids Fat +0.07% and Proteins +0.14%. He brings very good Feet&Legs +1.2 with an exceptional Parallelism +1.6 and Locomotion +1.3. He brings a good Health +0.6, exceptional Ketosis +1, a good Breeding +0.6 and very Easy calving at 93.



ONLY VAL: One of the best for Udder (ISU 161, BB, A2A2)

ONLY VAL is a high type bull with milk +720 kg and quality Proteins +0.11% and Fat +0.1%. He brings exceptional udder +2, with very strong Support +1.4 and Attachments +1.5. Daughters will have a good Health +0.7 and Udder Health +1.6.



OSORNO: The best bull for grazing system (ISU 165, BB, A2A2)

OSORNO is the healthy bull +0.7. He brings a long longevity +1, a strong breeding +1 and Easy calving at 92. Daughters will produce milk +620 kg with a high level of Proteins +0.11%, with strong udder attachments +2.3 and support +0.8. Cows will be ideal for grazing: small -0.9 and wide 0 with very good Feet&Legs +1.1.

Son of the new N°1 ISU JEONIX !!!