

HOLSTEIN PROOF RELEASE

EVOLUTION INTERNATIONAL

APRIL 2019

EVOLUTION HOLSTEIN GENETIC PROVIDES THE BEST BULLS TO MAXIMISE BREEDERS INCOME

EVOLUTION is once more in the international TOP ranking for this new proof run

FRENCH GENETIC MODEL BUILDS CONCRETE RESULTS ON THE FIELD

THE DEMONSTRATION IS AN IMPORTANT GENETIC PROGRESS : + 6 ISU pts in 2019

ISU	MILK	FAT	PROT	FERTI	SCS	TYPE	UDC	F&L
5,8	12	0,16	0,12	0,14	0,10	0,21	0,20	0,09

+ 17 pts of genetic progress over the last 3 years → A bull at 200 ISU in 2016 is at 183 today

NEW GREAT TPI / NM\$ OFFER

7 BULLS > 2700 TPI and 9 BULLS > 800 NM\$



NACASH : THE BREEDERS' MONEY MAKER

TOP GTPI IN EUROP +2855

SUPERHERO x RUBICON x ALTAOAK

International sire of sons, NACASH is perfectly balanced in all traits. He will increase the breeders' income thanks to high milk solids (+154). He combines a good fertility (+2.6), transmitted by his strong maternal line from UNICORN BLACKSTAR LILLY VG87 family and a faultless functional type (+2.4). He provides outstanding udders (+2.4) supplemented by ideal feet and legs (+1.6).

This amazing son of SUPERHERO is available as sire of sons for now. He is ranked **35th GTPI in the world and 1st GTPI in Europ** (bulls > 12 months). **He performs in most of evaluation systems.** He is ranked 11th in NTM, 14ⁿ in PFT, 9th in BPI.

NEVENLAND : AN OUTSTANDING STRAIN

HOTLINE x JOSUPER x NUMERO UNO

NEVENLAND comes from WILCOXVIEW RUDOLPH CALI EX93 family. He has the same maternal grand-dam as NOTTINGHAM and NEMON. This strain is recognized to be very productive and fertile and NEVENLAND confirms these main traits with +1525 in MILK and +2.6 in DPR. He also provides high fertility (+2.9) and superb health to his daughters.



NOTTINGHAM and **NEMON** still stay very stable in their proofs. They provide plenty of qualitative milk (>1700) and excellent udders to produce it. They build productive and long-lasting cows. NOTTINGHAM is now available in sexed semen.

NAXEL is the ideal bull available in SSF. He is still very high with +819 NM\$. He is by definition the modern and functional bull.



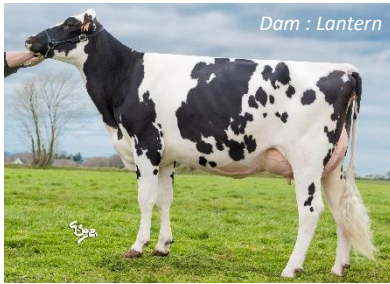
NIKLY : THE BALANCED BULL EASY TO USE

HARMONY x LTM PONDER x FRANZ

NIKLY is the functional and modern bull which will be easy to use in matings. He combines high milk production (+1565) and healthy udders (+2.6). He is ideal to build balanced and long-lasting cows (+6.6) in herds. He comes from the same productive and French strain as MESSENGER and NETSCAPE.

A COMPLETE RANGE OF NEW ISU BULLS

EVOLUTION BULLS = 32% OF INTERNATIONAL AND 63% OF FRENCH ISU RANKING



Dam : Lantern



NEESKENS : LEADER IN MILK PRODUCTION

PLUMBEO x ITINERIS x FENUGREC

NEESKENS is the 1st in milk of its generation. He perfectly combines milk (+1396) and functional traits. NEESKENS' daughters will produce in average 760 KG more than the average population. They will make +2780€* of turnover for their 1st lactation.

NEESKENS comes from the same family as MIVOUACK. This strain was hardly worked in France and produces modern and functional bulls with original pedigrees.



NUBILENE : THE IDEAL GRAZING PROFILE

SUPERHERO x INTERVIEW x GATSBY ISY

NUBILENE combines all the needed assets for grazing systems. He will build strong (+1.8) and medium sized cows with excellent feet and legs (+2.0) which will last in the herd (+2.4). His daughters have more than 90% chance to start a 2nd lactation. He provides good fertility (+1.3) and healthy milk (+2.1) to his daughters. NUBILENE comes from the same family as bulls like ISMORE and DIDOT.



Grd-dam : Igoan Lene



LOUXOR

is a new time our 1st ISU bull with +215 pts. He progress in milk (+988) and still stays well-balanced. His 1st daughters are calving at this time, we are looking forward to know their performances. His sons like NEWSTAR, NIVERNAIS, NOUXOR, etc. are also doing well and still stay high in the ranking.

NANTAIS is coming in conventional semen. He stays incredibly balanced and provides plenty of A2A2 milk (+1111) and exceptional solids (+123). He combines high fertility (+2.9) and good udder health (+1.7).

NIKERBY (ADAGIO P x RUBICON) is a new one coming. He provides an excellent mix of components and fertility (+2.0). His daughters would have more than 60% of NRR (at 90d). NIKERBY will build strong and healthy cows. He comes from DAMION CAPRIKA EX91 family which produce bulls like LIVEBOX or ILIADE.



Dam : Lituanie



NILWAY : THE EXCEPTIONAL TYPE

LIWAY SIL x HAMMIG ISY x DUNHILL

NILWAY is the 1st son of LIWAY SIL. He provides an incredible type (+3.9) combined with balanced production traits. He will build strong cows with incredible udders (+3.4). He brings solid feet and legs (+1.8) combined with excellent hoof health (+1.0). His daughters have less than 10% risks to have lameness against the average population.

OXFORD is also a new interesting profile with an outstanding type (+4.0) which is coming in sexed semen. He brings perfect functional traits and a balanced milk production.

FRENCH QUALITY AND RELIABILITY WITH COMING PROVEN BULLS

We are happy to see the bulls **JOYSTAR**, **JEPSILON**, **JAMES BOND** and **JACTIVE** have their 1st daughters coming (25 daughters in average) and the bulls remain stable in their proofs. They all are all well-balanced and modern bulls which have been used in quantity in France and all around the world.