



FIRST PROOF RUN FOR SYNETICS

This December 2022 proof run marks the real start, on 1 January 2023, of the new European cattle breeding cooperative SYNETICS, created by EVOLUTION and MASTERRIND. Discover the SYNETICS genetic offer combining performance, sustainability and innovation with a diversity to fit each breeding system.



SYNETICS, a diverse and compelling genetic cooperative which contributes to feeding the global population and provides value by creating products and solutions, fulfilling a wide range of needs for sustainable cattle farming and climate-friendly, efficient and trouble-free cattle.

SYNETICS genetic line-up associates bulls created by EVOLUTION and MASTERRIND programs, designing a major genetic offer in Europe dedicated to support farmers in achieving their business goals, while enjoying work and life.

SYNETICS breeding program in key figures

2 biggest european bovine population :
13 M cows controlled in Germany & France
7.4 M Dairy, 6.4 M Beef

180 000
Genotyping

37 000 breeders
shareholders

2 500 breeders
involved in the breeding program

200 new bulls
per year : 120 Holstein,
45 Normande, 35 Beef

8 000 000 doses
sold in 90 countries

Synetics creates and distributes genetics in partnership with:





WHAT'S NEW AFTER THE 2022 DECEMBER PROOF RUN ?

SYNETICS IS LEADER OF THE EUROPEAN RANKINGS

LEADER OF THE ISU RANKING

81 bulls > 210 ISU belong to SYNETICS

Among them : 38 are already available in conventional and/or sexed semen

SYNETICS has 2 of the TOP 3 ISU : SURIBAY P at +231 ISU and TORNADO at +229 ISU

#1 POLLED = SURIBAY P at +231 ISU → Available in sexed semen

#1 RED = TIME RED at +216 ISU

#1 RED PP = SHO RED PP at +201 ISU → Available in sexed and conventional semen

We provide 10 Pp sires > 210 ISU and 4 PP sires > 200 ISU

We provide 6 RED sires > 200 ISU

#1 and #2 Milk and INEL > 210 ISU : SANPEY and SALAH at +2247 kg and +1922 kg

#1 Type : RAMSES RF at +4.9

MAJOR PLAYER IN THE EUROPEAN RANKING

RZG : SYNETICS has the #3 CAPITOL at +164 RZG and the #6 RAINOW and ROVER PK at +163 RZG
SYNETIS has the #1 Proven : TOPSTONE at +161 RZG

PFI : 4 bulls in the TOP 50 with PELLEGRINO at +159 PFI

ICO : 4 bulls in the TOP 50 and RIDERCUP stays in the TOP 10 with +5233 ICO

NTM : RAINOW stays at the #13 with +37 NTM

PLI : SALAH is in the TOP 30 with +879 PLI

PFT : PELLEGRINO stays in the TOP 15 with +4716 GPFT

SYNETICS OFFERS A WIDE AND QUALITATIVE TPI - NM\$ OFFER

12 NEW BULLS > 2900 GTPI IN THE LINE-UP

In total the US offer of SYNETICS is :

- 30 bulls > 2900 GTPI (whose 4 > 3000 GTPI)
- 14 Polled bulls > 2500 GTPI (whose 5 PP)
- 12 Red bulls > 2600 GTPI



SYNETICS ISU LINE-UP



NEW BULLS IN VOLUM RANGE



We welcome 2 bulls in the VOLUM range : SANPEY and SOLFEGE.

SANPEY is the highest bull available in milk with +2222 kg of milk and +99 INEL over 210 ISU pts. He comes from the renowned family of Comestar Laurie Sheik VG-88 23*. He is available in conv. semen.

SOLFEGE offers a perfectly balanced profile with high milk at +1672 kg of milk and high components as well as excellent functional traits and very good udders. He is available in conv. and sexed semen.



NEW BULLS IN +VALUE RANGE

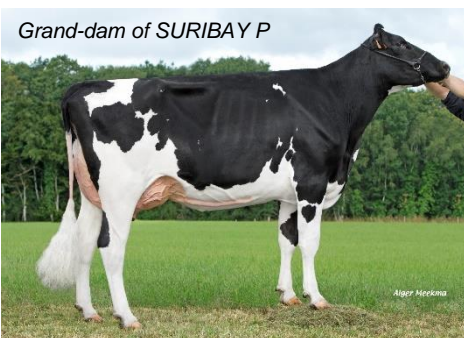
We welcome 5 bulls in this range : SURFEUR, SAVANO RF, SWIFFER, SINKO and SPOT RF.

SURFEUR is available in conv. semen and he is the perfect combination between components and health. He provides a high fertility at +2.9 and an excellent udder health at +3.0.

SINKO is also available in conv. semen. He offers extremely high Fat and Protein contents as well as a good milk at +1010 kg. He transmits functional udders. He comes from the same family as PERRY PK.



NEW BULLS IN PATURE+ RANGE



We welcome 2 bulls in this range and both are Polled : SURIBAY P and SUK P RF.

SURIBAY P is available in sexed semen only and is the #1 ISU in France. He offers high components combined with excellent functional traits. He comes from the same family as POLIBAY and SUNBAY. Finally, he transmits a modern body with very good udders.

SUK P RF is available in conv. semen. This polled sire offers a balanced body with functional udders and a very good combination between production and functional traits.

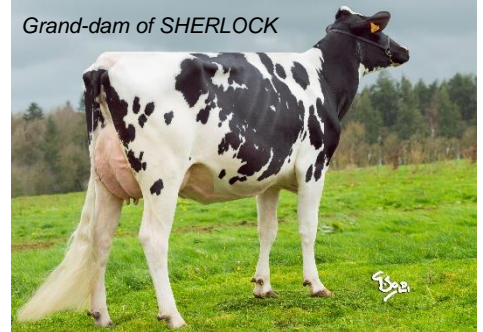


NEW BULLS IN AUTONOM RANGE

We welcome 5 bulls in this range : SHERLOCK, SPIELBERG, STARBOY, SAVERLAT P and SORBAY P.

SHERLOCK is available in conv. and sexed semen. He is the perfect balanced sire with a good production, incredible fertility at +3.2 and excellent udders. He is the brother of ROMAN RF from the family of LOUXOR.

SPIELBERG is available in conv. semen. He offers high milk at +1556 kg and a very quick milking speed at +0.9, combined with an outstanding type at +4.1 and udders at +3.2.



NEW HOMOZYGOUS POLLED BULLS



We add 2 new homozygous polled bulls to our range :

SIRI PP RF is available in sexed semen. This homozygous polled bull offers a very balanced profile with a good production level, high functional traits and good type.

SHO RED PP is available in conv. and sexed semen. This red sire offers an original pedigree and high components. His daughters will be particularly fertile with a fertility trait at +3.3 and will have a modern body with a moderate stature (+0.0).

SYNETICS TPI - NM\$ LINE-UP



Thanks to the merge of MASTERRIND and EVOLUTION offers we add 12 new TPI bulls to our range.

SOFTBALL is coming in conv. and sexed semen. This WHEELHOUSE son comes from the same family as POKEMON and offers a very balanced profile with a good A2A2 production and very good udders and type.

MAHJONG is available in conv. semen and this incredibly dairy sire provides an outstanding level of milk at +2224 lbs. He offers a high type with very good udders (+1.83).



HOLSTEIN PROOF RELEASE



DECEMBER 2022



SAIKO is coming in conv. and sexed semen. This very good sire comes from the same family as SKOLL PK. He provides high milk at +1497 lbs and good functional traits as well as modern balanced body.

TORRINGTON is available in conv. semen. He also offers a high milk volume at +1512 lbs and ensures long dairy careers with a longevity at +5.2. Finally, he transmits strong udders and a modern body.



SUSIC is coming in conv. and sexed semen. This sire comes from the same family as ROGERS. He offers a very strong body combined with well-attached udders and a good level of milk at +1259 lbs.

GENTRY is available in conv. semen. He is perfectly balanced between the production, the functional and the type traits. His daughters will be long-lasting with a good fertility and milk (+1274 lbs).