

GENETIC
EFFICIENCY



DIVERSITY



EXCELLENCE



RELIABILITY



Evolution International's Normande : the dairy cow that provides to farmers the highest added value of milk and meat, autonomy, and secured incomes.

TOP NEWS from August proof run of Evolution genetics

Evolution genetics : **100%** of the **TOP 11** of Normande breed

N°1: RAPHAELO 191 ISU

N°2: PLACEBO 188 ISU

N°3 : ROISOLEIL 187 ISU

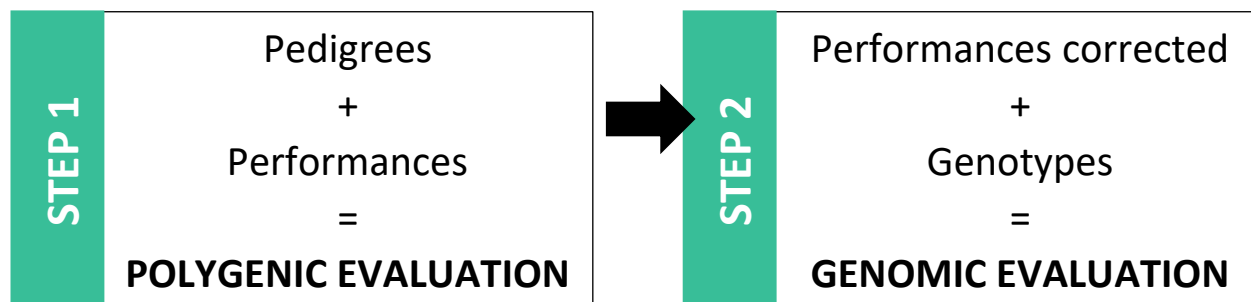
N°4 : PICASSO 186 ISU

N°4: SOLYSTABLE 186 ISU

- ❖ **18** bulls in the TOP 20 of the breed
- ❖ A diversity of bulls available in **Sexed**

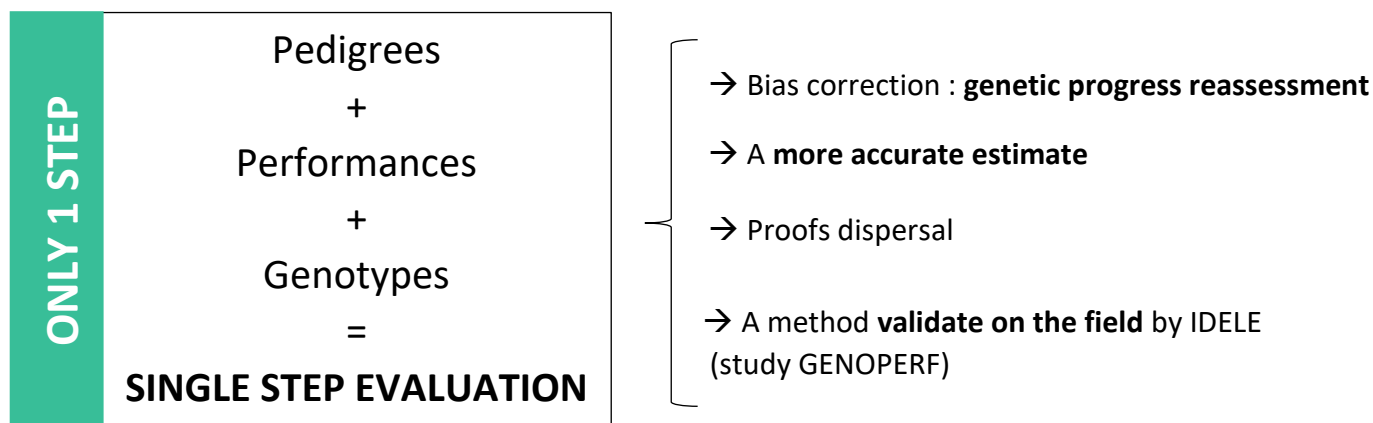
Remind on the new Method of proof running

BEFORE 2022



With polygenic then genomic evaluation there was a **bias in genetic progress** because of a genomic pre-selection who was not taken into account.

FROM 2022



Excellence of our genetics in new proofs

#1. Top bulls available in sexed

RAPHAELO (191 ISU, A2A2 & AB)

“TOP ISU”

RAPHAELO is the new N°1 available of the Normande breed

- Dual purpose Milk : + 1 383kg & SAMA +2.5 & Beef : +2.2
- Grazing type : small stature -0.7 with top F&L +0.8
- Easy calving : 91 on heifers and cows



RABELAIS (181 ISU, BB & A1A2)

“the ideal original in pedigree”

RABELAIS brings a top balance Milk / Type / Health

- Milk production : +1371 kg & +0.09% Fat & +0.03% Protein
- Type : +1.5 ; Udder : +1.0 ; Feet&Legs : +1.5
- Extra easy calving : 92

SIRIUS (181 ISU, BB & A2A2)

“the authentic Normande bull”

SIRIUS brings all qualities sought for a Normande bull

- Dual purpose qualities : +928 kg & +0.43% Fat & +0.22% Protein & +0.2 Beef
- TOP Grazing type : +2.6 Type & +0.4 Stature & +1.6 Feet&Legs
- Amazing fertility : +1.7 and easy calving 92



RIVAROL (177 ISU, AB & A2A2)

“The top Milk / Type ratio”

RIVAROL brings strong type qualities with high milk production

- High milk : +1 448 kg with +0.15% Fat
- TOP type : +2.0, Beautiful udders : +1.5, strong frame+1.4
- Easy calving 91 & high fertility +1.3

RIVOLI (181 ISU, AB & A2A2)

“Attractive porfile”

RIVOLI produces beautiful daughters with milk quality

- Milk quality : +0.18% Fat & +0.20% Protein & +1 210 kg
- Beautiful daughters : +2.3 Type, +2.1 Udder, +1.3 Feet&Legs
- Fertile daughters +1.0



#2. Top proven bulls



NAVIRE (149 ISU, BB & A1A2)

“Daughters with dairy profile”

NAVIRE has 52 daughters and confirms the dairy profile

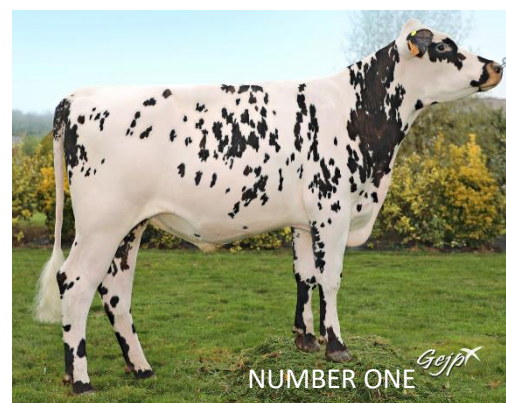
- High milk : +1118kg with 0.0% Protein and +0.02% Fat
- Beautiful udders : +1.4, strong type +2.0
- Fertile daughters +0.9

NUMBER ONE (161 ISU, BB & A2A2)

“The protein maker”

NUMBER ONE gets his 22 first daughters and confirms the dairy profile

- Milk production +992 kg with +0.28% Protein
- Amazing type +2.2 with beautiful udders +1.8, top Feet&Legs +1.6 and impressive frame +1.1
- Easy calving : 91



NEWYORK (162 ISU, AB & A2A2)

“The complete profile “

NEWYORK gets 65 promising daughters with a complete profile

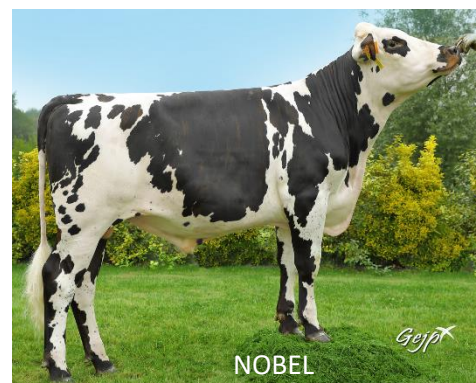
- Excellent production +1100 with high Protein +0.18% & Fat +0.15%
- Complete functional grazing type +1.4 : beautiful udders +1.8
- Easy calving 92 and still available in sexed semen !!

NOBEL (136 ISU, BB & A2A2)

“The grazing type “

NOBEL gets 50 promising daughters with a complete profile

- Milk production well balanced +915 kg with Protein +0.08% & Fat +0.07%
- High fertility of adult daughters : +1.2, Easy calving 93
- Grazing type



#3. Top bulls available in conventional



REBEL (176 ISU, AB & A2A2)

“fertility specialist”

REBEL is the best combination Milk & Fertility & Fat

- Milk production : +1337 kg & +0.29% Fat & +0.06% Protein
- Fertility : +2.0
- Strong attached udders : +1.7 & +1.2

RAZZIA (183 ISU, BB & A2A2)

“attractive profile”

RAZZIA comes from a famous family worked by Evolution

- Milk quality : +1268kg 0.38% Protein & +0.32% Fat & SAMA +3.0
- Dairy type with moderate stature +0.3 : +1.9 Feet&Legs, +1.5 Udders



RONALDINHO (175 ISU, BB & A1A2)

“the grazing systems bull”

RONALDINHO has a modern type and is easy to mate

- Dual purpose qualities : +861 kg & +0.24% Fat & +2.2 Beef
- Grazing type : -0.1 Stature & +0.9 Chest width & -5 days Gestation length
- Easy calving 92



SAGNOL (164 ISU, BB & A2A2)

“Proteins, excellent type, Health,....”

SAGNOL brings a well balanced profile

- Dual purpose qualities : +787 kg & +0.08% Fat & +0.23% Protein
- Amazing udders : +1.8, Moderate stature : 0.1, Top F&L: +1.3
- Easy calving 92 & Gestation Length : -3 days



ROSAMBO (172 ISU, BB & A2A2)

“A complete profile”

ROSAMBO has a modern type and is easy to mate

- Dual purpose qualities : +1 221 kg & +0.08% Fat & +0.10% Protein
- Udder health : + 2.1, Health : +1.5
- Functional udder : +1.5 Udder Depth, +1.4 Udder balance

