

GENETIC
EFFICIENCY



DIVERSITY



EXCELLENCE



RELIABILITY



EVOLUTION's Normande : the dairy cow that provides to farmers the world highest added value of both milk and meat, along with sustainable cows and farming

DECEMBER PROOF RUN : EVOLUTION'S HIGHLIGHTS

Discover the new Evolution leading bulls to increase herd's profitability according to profiles of sires and semen required. Evolution produces and provides main of the best Normande bulls availables.

#1- NEW Progeny Bulls

MANCHESTER	ISU 148
MONTFORT	ISU 141



#2 TOP Sexed Semen

RASPOUTINE	PUBLIVAL
PLATINI	PALACE



#3 TOP Available Young bulls



N°2 : PUBLIVAL	168 ISU
N°3 : PICASSO	165 ISU
N°4: PRESTIGE	164 ISU
N°5 : PLACEBO	164 ISU
N°6 : OBERLIN	163 ISU
N°7 : ROYAUME	162 ISU
N°10 : RINGMAN	159 ISU
And more : REQUIEM, ROTHEN, PRESIDENT, PITCHOULI, POP ROCK...	

#4 NEW & Exclusive : FertiMAX

Boost your fertility with +8 points of pregnancy rate with a unique innovation



#1 TOP BULLS WITH DAUGHTERS



MANCHESTER (148 ISU, BB & A1A2)

HD+ F&L

“the components winner”

With 45 first daughters, MANCHESTER confirms his high value profile

- Incredible fat +0,34%
- Inexhaustible feet & legs +1,5, highly homogeneous
- Very short gestation length (-8 d) with very easy calving (92)



MONTFORT (141 ISU, BB & A2A2)

“definitively productive”

Full brother of MANCHESTER, MONTFORT gets 49 promising daughters

- High milk production profile
- Strong udders (+0,9) and feet & legs (+1,2)
- Achieve sound (+0,7) and fast milking (+0,8)

#2 TOP SEXED SEMEN



RASPOUTINE (152 ISU, BB & A2A2)

“incredible total production “

RASPOUTINE comes from a highly productive family

- Incredible production +1202 with high Protein +1,9 & Fat +0,7
- Complete functional type
- Available only in sexed semen



PLATINI (141 ISU, BB & A2A2)

“all goals”

PLATINI is definitively conquering all fields

- High production +773
- Complete type +0,9
- Full health provider



PALACE (141 ISU, BB & A2A2)

“shiny quality”

PALACE comes from a high type and high longevity family

- Absolute balanced production with high fat +2,2
- Strong and ideally balanced udders +1,8
- Easy calving with moderate frame and good beef ability

#3 YOUNG BULLS CONVENTIONAL



RINGMAN (159 ISU, BB & A2A2)

HD+ SYBO

“Type competitor”

Out of MANCHESTER and MONTFORT famous and confirmed family

- Developed strong and wide cows +1,0
- Very sound Feet & legs +1,0
- Reproduction specialist +0,8



REQUIEM (147 ISU, BB & A2A2)

“Lifelong Efficiency”

Out of a NACRE confirmed family for strength, health and productivity

- TOP 3 of the breed for Fat % +4,7 with nice milk level
- Exceptional udder attachments
- Strong feet +1,0 highly resistant to infectious lesions +1,0



PRESIDENT (147 ISU, AB & A1A2)

HD+ SYBO

“Outcross leader”

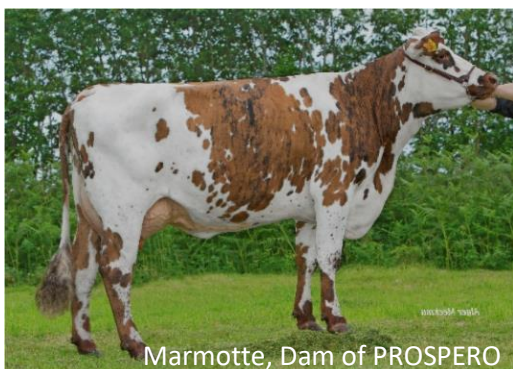
President is full outcross pedigree OBAMA x LIMERICK x HEZUS.

- High milk potential +840 with good fat +0,8
- Incredible strong feet +1,6 resistant to lesions +0,5
- Strong cows +1,0 that fit all breeding systems

#4 FERTIMAX: BOOST YOUR FERTILITY

FertiMAX is the latest and exclusive EVOLUTION's innovation on semen fertility that bring an additional fertility of +8 pts compared with classical conventional semen.

Out of Evolution R&D investment, the 14 Millions straws and AI full tracability achieved to set up fine semen composition and specific management that results in unequalled semen fertility advantage of +8 pts



Fertimax, breeder's choice

FertiMAX is highly interested to get pregnancy, highly preciated for

- Cows after 2 AI
- Heifers after 2 AI (ideal to complete sexed semen)
- Focused Heifers at 1st AI with high fertility concern

Bulls with Fertimax availability

- PROSPERO (145 ISU, BB & A2A2)
- NOCTUS (125 ISU, BB & A2A2)
- PAIMPONT (152 ISU, BB & A2A2) february 2022