

GENETIC  
EFFICIENCY



DIVERSITY



EXCELLENCE



RELIABILITY



## WHAT'S NEW AFTER THE 2021 DECEMBER PROOF RUN ?

### EVOLUTION IS LEADER OF THE FRENCH AND EUROPEAN RANKINGS

#### EVOLUTION ASSERTS ITS LEADERSHIP IN EUROPE

→ 4 podiums in 4 different countries:

**GERMANY: #2 RIDERCUP** with +164 RZG + ROVER PK and RAINOW in the TOP 10

**SCANDINAVIA: #1 RAINOW** with +43 NTM + ROVER PK in the TOP 10

**SPAIN: #1 PINKFLOYD** with +5370 ICO + RIDERCUP in the TOP 10

**POLAND: #1 PUMP** with +154 PFI + RAMAVINGA in the TOP 10

→ Excellent results in other countries:

**HOLLAND: 2 bulls** in the TOP 50

**ITALY: 2 bulls** in the TOP 20

**ENGLAND: 1 bull** in the TOP 10 + 2 in the TOP 50

#### AND CONFIRMS ITS LEADERSHIP IN FRANCE

→ 5 bulls of the TOP 10 ISU ranking are EVOLUTION

→ **15 EVOLUTION bulls** on the French TOP 20 ISU

→ **67 bulls** ≥ 200 ISU in our offer, whose 29 already available in **conventional** and/or **sexed** semen

**SAXO P** → #1 heterozygous **POLLED** bull at +213 ISU

**REVAUX PP** → #1 homozygous **POLLED** bull at +184 ISU already available in **sexed** semen

**ROUGE RED** → #2 **RED** bull at +204 ISU

Among the bulls ≥ 200 ISU, EVOLUTION proposes :

#1 INEL: **RAYBAN** and **RANDY**

#1 MILK: **RANDY** and **REVAUX PP**

#1 TYPE: **RAMSES RF** and **RODDICK**

#1 UDDER: **POULIDOR** and **RAMSES RF**

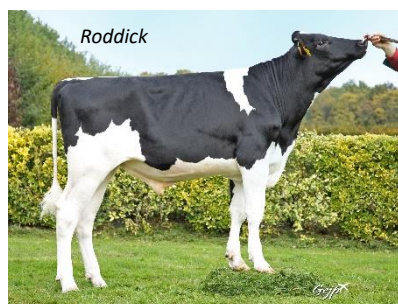
#1 FEET AND LEGS: **RAMSES RF** and **ROMAZY**

Finally, the 90% of the French TOP 30 PROVEN ISU is held by EVOLUTION with the arrival of new proven bulls.

## A DIVERSIFIED AND COMPLETE RANGE OF NEW ISU BULLS

### NEW BULLS IN VOLUM RANGE

NAME	C/S	SIRE	BCAS	ISU	INEL	P%	F%	Milk	Type	UDC	FLC	SAMA	FERTI	LGV	SCE	HHF SBV
<b>RODDICK</b>	S	GIGABYTE	A2A2	<b>211</b>	<b>61</b>	0,01	-0,02	<b>1713</b>	3,8	<b>3,1</b>	1,7	<b>1,5</b>	2,1	1,1	90	
<b>RANDY</b>	C + S	COMPLEX	A2A2	<b>206</b>	<b>89</b>	0,19	-0,15	<b>1979</b>	2,0	<b>1,9</b>	0,5	<b>1,3</b>	1,3	1,5	92	
<b>REVAUX PP</b>	S	VH ALFONSP	A1A2	<b>202</b>	<b>56</b>	-0,11	-0,39	<b>1802</b>	3,3	<b>3,1</b>	0,9	<b>1,3</b>	1,8	2,2	91	
<b>RUIZ P</b>	C	LAVONTE	A1A2	<b>194</b>	<b>62</b>	0,11	0,24	<b>1242</b>	2,7	<b>2,2</b>	1,1	<b>1,0</b>	1,6	1,0	89	



**RODDICK** is available in **sexed** semen. This prodigious son of GIGABYTE provides an amazing A2A2 production level with excellent fertility and udder health traits. He offers an incredible type with perfect udder attachments, an ideal teat placement and a body with width. His daughters will move very well thanks to solid feet and legs.

**RANDY** is also coming in **conventional** and **sexed** semen. He transmits an incredible level of milk highly enriched in A2A2 protein. He provides functional udders, easy to milk and a modern body.

### NEW BULLS IN +VALUE RANGE

NAME	C/S	SIRE	BCAS	ISU	INEL	P%	F%	Milk	Type	UDC	FLC	SAMA	FERTI	LGV	SCE	HHF SBV
<b>RAYBAN</b>	S	COMPLEX	A2A2	<b>215</b>	95	<b>0,33</b>	<b>0,42</b>	1346	2,4	1,8	1,3	<b>0,6</b>	1,8	1,3	89	
<b>ROVER PK</b>	S	ALTAZAZZLE	A2A2	<b>215</b>	83	<b>0,25</b>	<b>0,11</b>	1320	2,5	2,5	0,8	<b>0,1</b>	1,9	2,2	94	
<b>RODMAN</b>	C	GERRY	A2A2	<b>203</b>	73	<b>0,28</b>	<b>0,32</b>	1185	2,3	2,2	1,2	<b>1,8</b>	1,3	1,8	89	

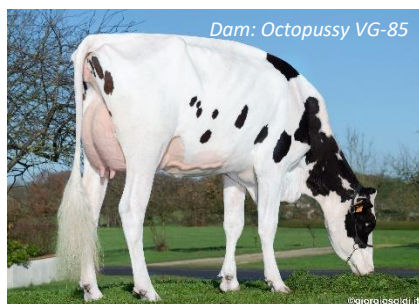
**RAYBAN** is coming in **sexed** semen. He brings an exceptional added value thanks to the components with a very high level of A2A2 milk. He offers a balanced profile with perfect production traits associated to a very good fertility and type. RAYBAN is the full brother of RANDY, from the renowned cow MB Suella Rubicon VG-86 which was on the front page of Holstein International magazine in November 2021.

**ROVER PK** is available in **sexed** semen. He offers an unprecedented level of milk contents. This excellent sire perfectly combines high components, A2A2 milk with an impressive rapid milking speed. He transmits small udders with excellent attachments, size with solidity and locomotion at +1.3. Sired by the famous Ronelee Outside Dabble EX-91, he stands out in the different evaluation systems with: +2908 TPI, +165 RZG, +38 NTM, +341 NVI, +5209 ICO and +812 PLI.



## NEW BULLS IN PATURE+ RANGE

NAME	C/S	SIRE	BCAS	ISU	INEL	P%	F%	Milk	Type	UDC	FLC	SAMA	FERTI	LGV	SCE	HHF SBV
<b>RICHIE</b>	C	LAVONTE	A2A2	<b>205</b>	59	<b>0,19</b>	<b>0,42</b>	921	2,4	1,7	<b>1,1</b>	1,7	<b>1,9</b>	1,7	91	
<b>RANGERS</b>	C	LAVONTE	A2A2	<b>203</b>	56	<b>0,16</b>	<b>0,32</b>	1007	1,7	1,6	<b>0,8</b>	2,7	<b>1,8</b>	2,8	90	<i>h5+</i>
<b>READYCASH</b>	C	NACASH	A1A2	<b>200</b>	74	<b>0,29</b>	<b>0,07</b>	1160	2,3	1,6	<b>1,1</b>	1,2	<b>1,5</b>	1,7	92	<i>SBV+ h5+</i>
<b>REFLEX P</b>	S	NACASH	A1A2	<b>197</b>	50	<b>0,10</b>	<b>0,11</b>	925	2,9	1,9	<b>1,5</b>	1,3	<b>1,6</b>	2,2	91	
<b>RAUL P</b>	C	OMEYER P	A1A2	<b>194</b>	60	<b>0,19</b>	<b>0,68</b>	777	1,9	1,5	<b>0,9</b>	2,4	<b>1,1</b>	2,1	91	



**REFLEX P** is coming only in **sexed** semen. This excellent son of NACASH is the perfect sire for grazing systems. He combines a multitude of qualities such as a rich production with high components, a good fertility and longevity. He offers strong feet and legs, functional udders with ideal teat placement and length and finally a medium size, very balanced with width. He comes from the same line as **RICHIE** from the farm GAEC DE LA MONNERIE.

## NEW BULLS IN AUTONOM RANGE

NAME	C/S	SIRE	BCAS	ISU	INEL	P%	F%	Milk	Type	UDC	FLC	SAMA	FERTI	LGV	SCE	HHF SBV
<b>RIDERCUP</b>	S	LARIAT	A1A2	<b>214</b>	79	0,31	0,79	<b>911</b>	2,4	2,0	<b>1,2</b>	0,8	<b>2,2</b>	1,7	<b>92</b>	
<b>ROSARIO</b>	S	RONALD RF	A1A2	<b>203</b>	68	0,26	0,28	<b>1027</b>	2,7	2,6	<b>1,3</b>	0,8	<b>1,9</b>	1,1	<b>93</b>	
<b>ROAD P RF</b>	C	JAYVANO RF	A1A1	<b>190</b>	47	0,18	0,16	<b>797</b>	2,5	1,8	<b>1,5</b>	1,9	<b>1,6</b>	1,5	<b>90</b>	
<b>ROCKCHIP</b>	C	GIGABYTE	A2A2	<b>186</b>	46	0,03	0,10	<b>1053</b>	3,5	2,9	<b>1,6</b>	0,6	<b>1,6</b>	0,4	<b>90</b>	

**RIDERCUP** is available in **sexed** semen. He is the perfect ambassador of the AUTONOM segment. He transmits a good level of milk with high fat and protein contents. He provides an excellent fertility to his daughters and easy calving. He offers a modern medium size body with solid feet and legs. This great son of LARIAT comes from the American family of RI-VAL-RE JESTHER NINA VG-88 which cumulate very good classifications. He cumulate excellent results in several evaluations systems such as: +2949 TPI, +167 RZG, +35 NTM, +5268 ICO, +149 PFI and +823 PLI.

In the AUTONOM range we see the arrival of a new proven bull: **NEWSTAR** whose 76 daughters allowed him to go up to +4,0 in Type trait and +4,0 in Udder trait while maintaining a good level of A2A2 milk at +751 and a good calving ease at 90%.



## THE US EVOLUTION OFFER IS COMPLETE AND COMPETITIVE

For this 2021 December proof run, EVOLUTION offers a high genetic range of sires with a total of **16 bulls > 2800 GTPI (7 > 2900)** all available in **conventional** and/or **sexed**

### 5 NEW BULLS AVAILABLE

NAAB	NAME	C/S	Based	SIRE	BCAS	TPI	NM\$	Milk	P%	F%	SCS	DPR	PL	SCE	PTAT	UDC	FLC
180HO15676	<b>RIDERCUP</b>	<b>S</b>	US	LARIAT	A1A2	<b>2949</b>	<b>922</b>	<b>1155</b>	0,06	0,15	2,83	<b>0,5</b>	5,0	2,5	<b>1,78</b>	<b>1,86</b>	<b>0,88</b>
180HO96981	<b>ROGERS</b>	<b>C + S</b>	FR	BATMAN SV	A1A2	<b>2920</b>	<b>906</b>	<b>1174</b>	0,06	0,18	2,81	<b>-0,5</b>	4,5	1,8	<b>1,66</b>	<b>1,37</b>	<b>0,68</b>
180HO15774	<b>ROVER PK</b>	<b>S</b>	US	ALTAZAZZLE	A2A2	<b>2908</b>	<b>912</b>	<b>686</b>	0,07	0,26	2,93	<b>0,3</b>	5,2	1,5	<b>1,52</b>	<b>1,66</b>	<b>0,43</b>
180HO15862	<b>RESCUE</b>	<b>C + S</b>	US	ALTATIKI	A1A2	<b>2885</b>	<b>926</b>	<b>970</b>	0,08	0,20	2,88	<b>-0,1</b>	5,4	1,8	<b>0,76</b>	<b>1,08</b>	<b>0,03</b>
180HO96790	<b>ROSARIO</b>	<b>S</b>	FR	RONALD RF	A1A2	<b>2875</b>	<b>752</b>	<b>866</b>	0,08	0,11	2,74	<b>0,9</b>	5,0	1,8	<b>1,98</b>	<b>1,77</b>	<b>1,63</b>



**ROGERS** is coming in **conventional** and **sexed** semen. This great son of BATMAN comes from the family of the cow MISS OCD ROBUST DELICIOUS VG-87 which is the dam of the bulls DELTA, DENVER, DRACO, DYNASTY, DYNAMO and many more. ROGERS transmits an excellent combination of production and type traits. He provides very good udders with strong attachments and support. He offers a balanced body with enough width and depth and good feet and legs.



**RESCUE** is coming in **conventional** and **sexed** semen. This sire comes from the deep outcross maternal line of RONELEE OUTSIDE DABBLE EX-91, grand-dam of the renowned bull MILLENNIUM and dam of the bull DOMAIN and DURABLE RC. He is also the brother of the great bull **ROVER PK** which is available in our offer in **sexed** semen. RESCUE provides a balanced production. His daughters will have long dairy careers and will calve very easily. He transmits very good udders, extremely well attached and a modern body with a good balance between stature and width.



**ROSARIO** is coming in **sexed** semen only. He comes from the same family as our bulls PEPPY, OXBOW and OSLO RF. The family of GOLD CHIP HERMINE TUAL EX-92 was intensively worked in France and in Holland: high GTPI cows, many TOP sellers in auction sales. ROSARIO offers a particularly balanced profile with a good combination of production, functional and type traits. Indeed, he transmits a good level of milk and components and healthy udders and fertility. He provides excellent udders with strong attachments and long teats, perfect feet and legs and a strong body. ROSARIO confirms his qualities in many evaluation systems such as: +203 ISU, +34 NTM, +758 PLI, +159 RZG and +142 PFI.



## **EVOLUTION GENETICS STANDS OUT IN THE EUROPEAN RANKINGS**

*EVOLUTION proposes a dense offer in European evaluation with bulls that express themselves very well in several evaluation systems (ICO, PFT, PLI, NTM, RZG, PFI, etc.).*

***We cumulate 4 podiums in RZG, NTM, PFI and ICO and very well ranked in NVI, PFI, PFT and PLI.***



**RIDERCUP** is #2 with +167 RZG.  
**ROVER PK** is #4 with +165 RZG.  
**RAINOW** is #6 with +164 RZG.  
**PELLEGRINO** and **PUMP** are in the TOP 50 with +160 RZG.



**RAINOW** is in the TOP 20 with +354 NVI.  
**ROVER PK** is in the TOP 50 with +341 NVI.



**PINKFLOYD** is #1 with +5370 ICO.  
**RIDERCUP** is #9 with +5268 ICO.  
**RAINOW**, **ROVER PK** and **RODDICK** are in the TOP 30 with +5257, +5209 and +5142 ICO.



**PUMP** is #1 with +154 PFI.  
**RAMAVINGA** is #11 with +150 PFI.  
**RAINOW**, **RIDERCUP**, **PINKFLOYD** and **RODDICK** are in the TOP 20 with +149 PFI.



**POULIDOR** and **PELLEGRINO** are in the TOP 20 +4642 and +4630 PFT.  
**ROSARIO** and **RAYBAN** are over +4500 PFT.



**RAINOW** is #1 with +43 NTM.  
**ROVER PK** is #9 with +38 NTM.  
**RIDERCUP**, **POMPADOUR** and **ROSARIO** are in the TOP 50 with +35, +35 and +34 NTM.



**RAINOW** is #8 with +887 PLI.  
**RIDERCUP** and **ROVER PK** are in the TOP 50 PLI with +823 and +812 PLI.