

GENETIC  
EFFICIENCY



DIVERSITY



EXCELLENCE



RELIABILITY



## THIS APRIL PROOF RUN HIGHLIGHTS OUR GENETIC EFFICIENCY

### Genetic base change in France in April 2020

Every year in France during the April proof run we process to a **genetic base change**. Genetic evaluations are expressed as a deviation to a group of females. The 2020 reference population includes **registered cows born from 2012 to 2014**. The male and female proofs released varied as a result of this change:

ISU	INEL	MILK	F‰	P‰	FERTI	SAMA	LGV	TYPE	UDC	FLC
- 5,5	-2,1	-26	-0,12	-0,09	-0,11	-0,09	-0,09	-0,23	-0,21	-0,10

**FRENCH GENETIC MODEL BUILDS CONCRETE RESULTS ON THE FIELD**  
**THE DEMONSTRATION IS AN IMPORTANT GENETIC PROGRESS : + 5,5 ISU pts in 2020**

### EVOLUTION IS POSITIONED IN THE FRENCH RANKINGS

→ EVOLUTION represents **55%** of the TOP 50 ISU in France  
 → **30%** of the bulls > 200 ISU are EVOLUTION internationally

**PALMA P**: #1 Polled ISU - #5 Polled RZG - in the TOP 10 Polled PFI and NVI

**PERFECT**: #2 French in ISU - in the TOP 30 RZG and ICO

EVOLUTION proposes the most complete and competitive offer **available**:  
 6 of the 10 best sires available in **sexed semen** are distributed by EVOLUTION, of which **OMEZOU** (KP CARTER x RUBICON) that peaks at 206 ISU.



*Among the bulls > 190 ISU:*

**+VALUE**: EVOLUTION is #1 to generate added-value, of which OUPS (+0.5 % PROT)

**VOLUM**: 3 of the 6 most dairy bulls are EVOLUTION, of which OUGEUL (+1581 MILK)

**SHOW**: 6 of the TOP 10 bulls are EVOLUTION, of which OUCHKA (+3.7 TYPE)

**PATURE +**: OXTERRIL and OMEZOU the 2 highest ISU bulls with > 2.0 in FERTI and SCS



**LOUXOR** remains the **#1 proven bull in the world in ISU** (Rel. = 95%) with +192 ISU. This incredible bull was first in the ranking for six consecutive proof runs after his first release in 2017 and has remained in the TOP 10 since then. He has more than 10 commercial sons and many excellent daughters.

EVOLUTION is the 1<sup>st</sup> player in the TOP proven 95 Rel. worldwide:  
 11 bulls in the TOP 20 are EVOLUTION.

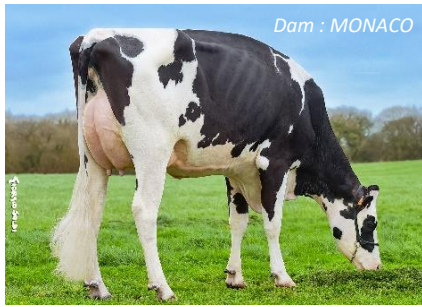
#### Summary of this Holstein Proof Release:

→ Page 1: French evaluation - ISU

→ Page 2: US evaluation – TPI / NM\$

→ Page 3: European evaluations – RZG, NVI, ICO, PFT, ICO, etc.

# A DIVERSIFIED AND COMPLETE RANGE OF NEW ISU BULLS



## OPAVA: PERFECT MIX OF MILK & TYPE

MY WAY x VG85 POPEYE x VG85 HERIVIA

Worthy heir of MY WAY, from the NAURINE GIBBON EX90 strain. OPAVA stands out for superb udders, high production combined with excellent udder health. He is available in **conventional** and **sexed** semen.

+1123 MILK    A2A2    +2.0 CEL    +3.2 TYPE    +2.9 UDC } **HD+ for Type**

**OUGEUL** is newly coming in **conventional** semen. Thanks to his outcross pedigree, he is easy to use in herds. He provides plenty of milk (+1581) and excellent health traits (+1.3). **ORSANS** also brings lots of A2A2 milk (+1546). He offers great width (+1.8) and strength as well as extraordinary hoof health (+1.2). ORSANS is also coming in **conventional** semen. These 2 bulls are both homogeneous on milk trait.

**HD+ for Milk**



## OCRACK P: THE POLLED GRAZING ASSET

KEEPER P x VG86 DIJON RONE x VG85 MARDIGRAS

OCRACK P comes from the JEBRASKA strain and like his ascendants he provides a modern profile, perfectly adapted to grazing systems. This functional bull impeccably combines quantity and quality of milk. He is available in **conventional** semen.

+903 MILK    A2A2    +0.13 % PROT    +2.5 UDC    -0.2 STA



## OLIC: INCREDIBLE PROTEIN & FAT

BATTLESHIP x GP83 JAMES BOND x VG86 MACK COYNE

OLIC comes from a family with outstanding classifications and a premium pedigree from the famous BERGAME SHOTTLE VG90 cow. He is available in **conventional** and **sexed** semen.

+0.27 % PROT    +0.32 % FAT    +2.1 CEL    +2.5 TYPE    +1.2 RLI    A2A2



+4273 PFT - in the TOP 50 PFT

**OUPS** is newly coming in **conventional** semen. This superb son of MERCUTIO enables a richer (0.74 F% and 0.50 P%) production. His daughters will be particularly efficient (+3.2). OUPS provides lots of strength and width (+1.2). He is homogeneous on Fat% and Protein% traits.

**HD+ for Fat & Prot**



## OLSEN: IDEAL FOR EASY-GOING COWS

MILKY x GP83 JEDI x VG85 SHAMROCK

This son of MILKY comes from the same family as MODERATO. He provides the complete production package with high solids and milk. OLSEN is the perfect partner to progress in feet and legs. He is now available in **conventional** and **sexed** semen.

+1134 MILK    +1.3 FI    -3J GL    +2.3 TYPE    +1.8 FLC } **HD+ for FLC**

**ONNY** is newly coming in **conventional** and **sexed** semen. He combines a significant production (+927) with high components (0.21 P% and 0.32 F%). He provides suitable udders for robotic milking with ideal teat length (+0.8). This son of MILKY will bring a lot of strength (+2.2) and width. The locomotion would be ideal (+1.5). His grand-dam JOUGANE VG88, is none other than the full sister of the bull JETSET.

## New TPI formula from April 2020

### Old formula since August 2017 :

21% PTAP + 17% PTAF + 8% FE + 8% PTAT - 1% DF + 11% UDC + 6% FLC + 4% PL + 3% LIV + 5% SCS + 13% FI - 2% DCE - 1% DSB x 3,9 + 2187

### New formula from April 2020 :

19% PTAP + 19% PTAF + 8% FE + 8% PTAT + 11% UDC + 6% FLC + 2% HT + 5% PL + 3% LIV + 4% SCS + 13% FI - 1% DCE - 1% SDB x 3,8 + 2370

This new formula is accompanied by a **genetic base change** which is **updated every 5 years**. The milking cows **born in 2015** define the new base which is **set back to zero**. Adjustment of the predicted transmitting abilities affects all animals undergoing genomic evaluation. These PTAs are calculated as **deviations** from this reference population. The proofs released varied as a result of this change:

NM\$	MILK	FAT	PROT	DPR	SCS	PL	SCE	PTAT	UDC	FLC
-231	-492	-25	-20	-0,24	+0,08	-1,86	+0,40	-0,76	-0,85	-0,49

## THE US EVOLUTION OFFER IS GETTING STRONGER

Our offer is enriched with **10 bulls > 2700 TPI**

7 of which are already available in **conventional** and **sexed** semen

BULL	GTPI	NM\$	SIRE	MGS	BIRTH
PERRY	2884	659	DISCJOCKEY	HOTLINE	05/2019
PHARELL	2849	677	ALTAHOTJOB	MAGICTOUCH	08/2019
PIXIE	2842	723	GAMECHANGER	TRACER	05/2019
NACASH	2819	671	SUPERHERO	RUBICON	12/2017
OLDBOY	2774	636	TOPNOTCH	RUBICON	12/2018
NEMON	2771	635	ACCELREOWN	JOSUPER	09/2017
OBJECTIVE	2764	658	WINDMILL	EL BOMBERO	04/2018
NEVENLAND	2759	599	HOTLINE	JOSUPER	12/2017
OKEANOS	2757	660	ALTALAWSON	MODESTY	11/2018
NOTTINGHAM	2708	643	ACCELREOWN	JOSUPER	10/2017

**NACASH** passes the 2800 TPI mark with a score at **+2819** GTPI. This international sire of sons stays very attractive and perfectly balanced in all traits. He will increase the breeders' income thanks to high components (+0.22 %F). He combines a good fertility (+1.0), transmitted by his strong maternal line from UNICORN BLACKSTAR LILLY VG87 family and a functional type (+1.6). He provides outstanding udders (1.4) supplemented by ideal feet and legs (+1.0).

## 2 NEW BULLS IN THE US OFFER

### OKEANOS: ADDED-VALUE DRIVER

ALTALAWSON x MODESTY x VG86 MERIDIAN

**2757 GTPI - 660 NM\$**

He comes from a family traces back to the brood cow WESSWOOD RUDY MISSY EX92. OKEANOS is ideal to produce functional and long-lasting cows. He is now available in **conventional** semen.

0.16 % FAT    0.10 % PROT    A2A2    +6.3 PL    +3.1 DPR    +6.8 SCE





## OLDBOY: STRONG AND PRODUCTIVE

TOPNOTCH x VG86 RUBICON x MCCUTCHEN

**2774 GTPI - 636 NM\$**

He comes from the renowned and productive family of the Gold Medal Dam SHER EST PATRON SACY VG88. He is available in **conventional** semen.

+956 MILK    A2A2    +1.5 PTAT    +1.5 STR    +1.2 UDC    +0.68 TL

## EVOLUTION GENETICS STANDS OUT IN THE INTERNATIONAL RANKINGS



PALMA P (x KEITH) is #5 polled in the German ranking with 154 RZG.  
 PERFECT (x HOTSPOT) is in the TOP 30 of the German ranking with 158 RZG.  
 5 sons of the EVOLUTION bull MANANA RED are in the TOP 50 Red of the German ranking.  
 MANANA RED remains in the TOP 60 with +146 RZG.



LOUXOR is ranked TOP 20 in the ranking of proven bulls with 25 NTM.  
 The #1 NTM in genomic classification is currently a son of the EVOLUTION bull NORLAND.



The #1 NVI in genomic classification is a son of the renowned EVOLUTION bull LOUXOR.  
 PALMA P is in the TOP 10 polled of the Holland ranking.  
 MANANA RED is #7 in the Holland Red Holstein ranking with 289 NVI. The 8<sup>th</sup> bull is a son of MANANA RED.



PERFECT is in the TOP 20 of the Spanish ranking with 5077 ICO.  
 PLATON, OUED, POULIDOR and PALERME are in the TOP 50 of the Spanish ranking.  
 LOUXOR remains in the TOP 20 proven bulls of the Spanish ranking with 4336 ICO.



PERRY (x DISCJOCKEY) is in the TOP 10 of Italian ranking with 4473 PFT.  
 OLIC (x BATTLESHIP) is in the TOP 50 of Italian ranking with 4273 PFT.

PERRY stands out in several different evaluation systems. Indeed, he is in the TOP 15 of Canadian ranking with 3715 LPI. He is also in TOP 50 ICO with 4977 ICO and in the TOP 20 PFI with 145 PFI.



PALMA P is in the TOP 10 polled of the Polish ranking with 143 PFI.  
 OGOUENO and PERFECT are also in the TOP 100 of the Polish ranking.  
 JACTIVE is in the TOP 20 proven bulls of Polish ranking with 136 PFI.