

GENETIC
EFFICIENCY



DIVERSITY



EXCELLENCE



RELIABILITY



WHAT'S NEW AFTER THIS AUGUST PROOF RUN ?

EVOLUTION IS POSITIONED IN THE FRENCH RANKINGS

→ IN THE TOP ISU : **PRODIGY #1** at +219 ISU, **PERFECT** and **PERRY PK #2** at +218 ISU

→ EVOLUTION is leader of the **available offer** with sires easy to use in mating thanks to the **quality**, the **diversity** and the **originality** of their profiles and pedigrees.

22 bulls ≥ 200 ISU whose 12 already available in **conventional** or **sexed** semen.

Our offer is **AVAILABLE** and is above all, adapted to breeders' expectations :

#1 PROVEN (95% REL) is **LOUXOR** with +183 in ISU

#1 **SEXED** is **OXTERRIL** with +208 in ISU → **NEW IN FERTI+**

#1 TYPE is **PRAGMATIC** with +4.1 in TYPE

#1 **RED** is **PIKA RED** with +199 in ISU → *available in **sexed** semen*

PALMA P and **PLESLIN P** → 2 new **POLLED** bulls > +190 ISU both available in **sexed** semen.

9 bulls of the TOP 10 PROVEN (95% REL) are EVOLUTION (LOUXOR, LEVIS, JINGLE, HOSPADOR, LIFTING, JETSET, JURIDIK, JAPIRO, HURION ISY) → EVOLUTION genetics is truly reliable !

Discover also a new proven bull much-awaited, **LIWAY SIL** with +3.4 in type and +2.6 in feet and legs, whose daughters are exceptional !

EVOLUTION STANDS OUT IN THE INTERNATIONAL RANKINGS

→ A growing offer in US evaluation with **17 bulls > 2700 GTPI** whose 9 available in **conventional** and / or **sexed** semen. This offer is completed with the **arrival of 3 new bulls available now**. *See below.*

→ A dense offer also in European evaluation with bulls that express themselves very well in several evaluation systems (ICO, PFT, PLI, NTM, RZG, PFI, etc.). *See below.*

A DIVERSIFIED AND COMPLETE RANGE OF NEW ISU BULLS

Dam of PEPSI RF



PEPSI RF: EXCEPTIONAL PRODUCTION TRAITS

HOTS P SUP x LOUXOR x VG86 PRESID LLM

PEPSI RF offers an incredible production, a character inherited from its maternal family that is very productive for generations. He is now available in **conventional** and **sexed** semen.

+1804 MILK **+0.22 % PROT** **A2A2** **+94 INEL** **+3.6 FE** **+1.3 FLC**

PLATON is also newly coming in **conventional** semen. Thanks to his outcross pedigree, he is easy to use in mating. He provides plenty of milk (+1228) and excellent health traits (+1.4). He offers strong feet and legs (+1.9) for a good locomotion.

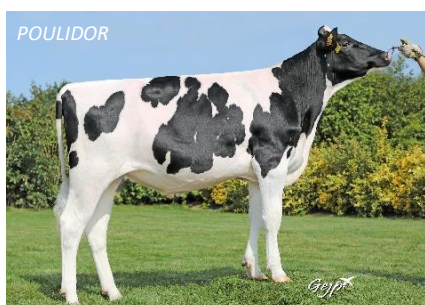


PACINO : MODERN AND VERSATILE

KEITH x VG86 JOYSTAR x VG89 MINK

PACINO comes from the very well-classified family from which JAPPELOU and JAZZSTICK come from. Like his ascendants PACINO provides a modern profile, perfectly adapted to grazing systems. He is available in **conventional** semen.

+0.23 % PROT **+1.9 FERTI** **+2.4 UDC** **+2.1 FLC** **+0.1 STA** **+1.0 STR**



POULIDOR



POULIDOR : BALANCED AND EASY TO USE

NEWSTAR x BALDUR x DRANCE ISY

POULIDOR has a very original pedigree. He offers long dairy careers as his ascendants which did an average of 5 lactations over 4 generations. He is now available in **sexed** semen.

+0.26 % PROT **+0.19 % FAT** **A2A2** **+3.3 UDC** **+1.5 RLI** **+1.7 FERTI**

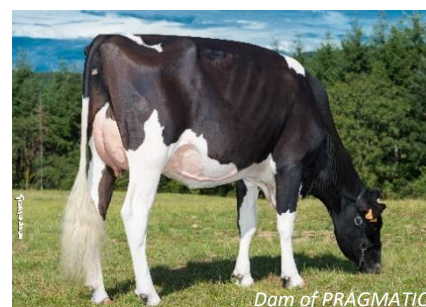


PRAGMATIC : INCREDIBLE TYPE

NEWSTAR x BATTLECRY x DEFEND SSI

This son of NEWSTAR provides an incredible type thanks to outstanding udders, great feet and legs and a super-balanced frame. He is now available in **conventional** semen.

+729 MILK **A2A2** **+3.3 CEL** **+4.1 TYPE** **+3.6 UDC** **+1.7 FLC**



Dam of PRAGMATIC

PERIGNE is newly coming in **sexed** semen. He combines a significant production (+1063) with an excellent health (+1.4). He provides suitable udders for robotic milking with ideal teat length and placement. He comes from the renowned family of HICKORYMEA SHOTTLE OVADA VG86 which transmitted long dairy careers and high classifications.

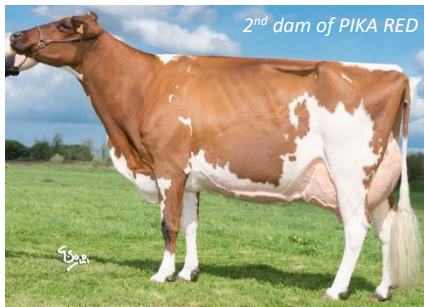


PALMA P is newly coming in **sexed** semen. He provides lots of A2A2 milk (+1153) as well as healthy (+3.5) and well-shaped udders (+2.1). He offers solid feet and legs (+1.6) and a good hoof health (+1.3).



PRETTY PP is also coming in **conventional** semen. This homozygous polled bull offers balanced production traits and a good health (+1.3). He provides a medium size (+0.1) with lots of strength (+0.7). His daughters will have a long productive life (+1.7).

PLESLIN P is coming in **sexed** semen. He is particularly functional and well-balanced. He offers a balanced type with lots of strength (+1.6) and excellent udders (+2.3). He finally combines a good A2A2 milk level (+865).



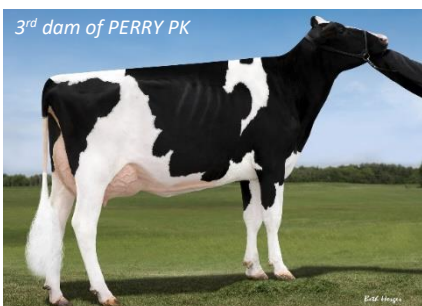
PIKA RED is available in **sexed** semen. This amazing red Holstein bull comes from the same family as NOUCHIK and NANCY RED. He builds cows that are harmonious in the type (+2.0) with an incredible health (+1.7) and a good production balance.

POZ RED P is also coming in **conventional** and **sexed** semen. He is registered in both Pie Rouge and Holstein breed. His daughters will be particularly functional as much in type as in health and production.

THE US EVOLUTION OFFER IS GETTING STRONGER

For this August proof run, EVOLUTION offers a high genetic range of sires with a total of **9 bulls > 2700 GTPI** all available in **conventional** and/or **sexed** semen

3 NEW BULLS AVAILABLE



PERRY PK : BEST COMBINAISON OF TYPE AND MILK

DISCJOCKEY x HOTLINE x VG87 DELTA

2848 GTPI - 635 NM\$

PERRY PK is now available in **conventional** semen **with the exception of Europe where it will only be available from June 2021**. He comes from the renowned family of Larcrest Crimson EX-94 which has many bulls in AI and has proven herself as a great broodcow in the maternal line.

+1210 MILK +4.8 PL +2.65 SCS +2.24 PTAT +2.17 UDC +0.45 FLC

He provides an exceptional type supplemented by outstanding udders particularly well-attached. He is well-rounded in production traits with high milk volume. He is the ideal bull that offers so much type and milk.

He performs in many genetic evaluations like in Italy, in France, in Canada, in England, in Spain, in Poland, etc. with always the same characteristics: a lot of milk and an exceptional type.



+36 NTM



+5432 ICO



+4497 PFT



+148 PFI



+608 PLI



+218 ISU



+3670 LPI





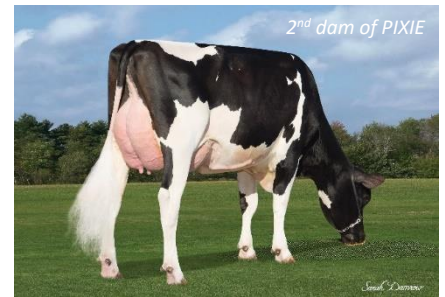
PIXIE : MODERN SIRE EXCEPTIONAL IN MILK

GAMECHANGER x TRACER x VG85 DELTA

2789 GTPI - 679 NM\$

PIXIE is now available in **conventional** semen. He comes from the productive family of Sully Shottle Otomique VG-87 and he did inherit milk from his maternal line. Indeed, he provides an incredible milk production level combined with a modern type and good functional traits.

+1740 MILK +0.7 FI +1.6 SCE +0.82 UDC -0.08 STA +0.13 STR



2nd dam of PIXIE



Dam of PARIS



PARIS : IDEAL FOR FUNCTIONAL COWS

TOPNOTCH x VG86 RUBICON x MCCUTCHEN

2765 GTPI - 612 NM\$

PARIS is available in **conventional** semen. He comes from the same family as HAMMIG ISY and JINGLE from the American cow Cooks-Valley Rotate Bluebil EX-93.

+796 MILK +6.0 PL +2.9 DPR +1.82 UDC +1.7 SCE +1.5 RLI

Like his previous dams, his daughters will be very healthy and particularly fertile. PARIS provides superb udders, particularly functional and well-attached. His daughters will have a long productive life thanks to optimal health traits.

EVOLUTION GENETICS STANDS OUT IN THE INTERNATIONAL



2 bulls in the TOP 100 GRZG with **PERFECT** (+156 RZG) and **PEPPY** (+155 RZG).

PALMA P is in the TOP 50 GRZG POLLED with +150 RZG.

2 bulls in the TOP 100 GRZG RED with **MANANA RED** (+148 RZG) and **PAVEL RED** (+146 RZG).



5 bulls in the TOP 100 GNTM with **PERRY PK #17** (+36 NTM), **OPROD** and **OGOUENO** (+33 NTM), **PLATON** and **PERFECT** (+32 NTM).

2 bulls in the TOP 50 proven NTM with **LEMON P** and **LEVIS** (+21 NTM).



3 B&W bulls in the TOP 100 GNVI with **PEPPY** (+293 NVI), **PERFECT** (+288 NVI), **PEPSI RF** (+287 NVI).

MANANA RED #14 (+288 NVI) of the TOP 100 GNVI R&W and **LAIUS RED #15** (+162 NVI) of the TOP 100 NVI R&W.



6 bulls in the TOP 100 GICO with **PERRY PK #4** (+5431 ICO), **PERFECT** (+5160 ICO), **PLATON** (+5110 ICO), **PRODIGY** (+4997 ICO), **PERNIK** (+4994 ICO) and **PIANO** (+4991 ICO).



5 bulls in the TOP 100 GPFT with **PERFECT #8** (+4525 PFT), **PERRY PK #9** (+4497 PFT), **POULIDOR** (+4429 PFT), **PARIS** (+4272 PFT) and **OKEANOS** (+4258 PFT).



5 bulls in the TOP 100 GPFI with **PERRY PK #8** (+148 PFI), **POULIDOR #14** (+147 PFI), **PERFECT #20** (+146 PFI), **PLATON** (+144 PFI) and **PALMA P** (+144 PFI) which is in the **TOP 5 GPFI POLLED**.

JACTIVE is in the TOP 50 PROVEN PFI (+137 PFI).