

GENETIC  
EFFICIENCY



DIVERSITY



EXCELLENCE

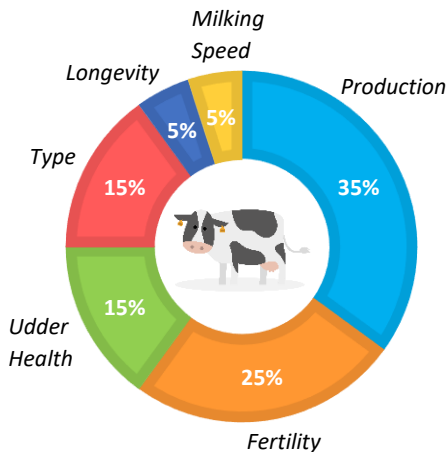


RELIABILITY



## WHAT'S NEW AFTER THIS 2021 APRIL PROOF RUN ?

### New ISU formula from 2021 April proof run



#### WHY ?

Every 10 years the ISU formula evolves to meet the expectations of dairy farmers. This allows to consider the genetic progress made and to set new objectives for the breed. The 2021 ISU offers a **productive, functional** and **sustainable** dairy cow.

#### HOW ?

→ Same distribution between **production**, **functional** and **type**.

#### Major changes within each category:

**Production:** More weight on fat for a better valuation of the milk price.

**Functional:** More weight on fertility and particularly on heifer fertility.

**Type:** More weight on feet and legs, a more functional udder to ensure an optimal milking and a body that favors width while controlling stature.

### Genetic base change in French evaluation

Every year in France during the April proof run we process to a **genetic base change**. Indeed, genetic evaluations are expressed as a deviation to a group of females. The 2021 reference population includes **registered cows born from 2013 to 2015**. The male and female proofs released on **April 7<sup>th</sup>** will therefore vary as a result of this change:

ISU	INEL	MILK	F‰	P‰	FERTI	SAMA	LGV	TYPE	UDC	FLC
-5,6	-2,7	-45	-0,05	-0,08	-0,09	-0,10	-0,07	-0,19	-0,18	-0,08

### EVOLUTION IS POSITIONED IN THE FRENCH RANKING

→ **RAMSES RF** (+221 ISU) is **#2** and **PINKFLOYD** (+217 ISU) is **#3** of the ISU ranking in the world. **PINKFLOYD** is already available in **sexed** semen.

→ **15 EVOLUTION bulls** on the French TOP 20 ISU.

→ **41 bulls ≥ 200 ISU** in our offer, whose 18 already available.

The best offer is the AVAILABLE offer :

#1 ISU is **PINKFLOYD** with +217 in ISU

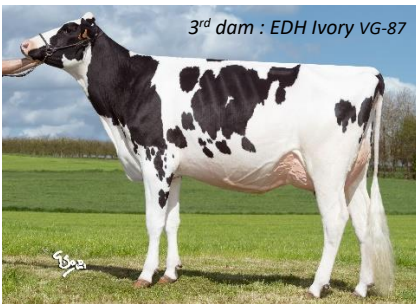
#1 and #2 **RED** are **PIKA RED** and **PROXY RED** with +194 and +191 in ISU

#1 **POLLED** is **PERIGORD P** with +200 in ISU

#1 **PROVEN (95% REL)** is **LEVIS** with +184 in ISU

## A DIVERSIFIED AND COMPLETE RANGE OF NEW ISU BULLS

NAME	C/S	SIRE	MGS	BCAS	ISU	INEL	P%	F%	Milk	Type	UDC	FLC	SAMA	FERTI	LGV	SCE
PELLEGRINO	C + S	TOPNOTCHPR	ROUTER	A1A1	<b>208</b>	<b>66</b>	0,04	0,36	<b>1509</b>	2,5	<b>2,6</b>	0,8	<b>1,7</b>	2,6	2,7	92
PACOLINE	<b>S</b>	DATELINE	ADORABLE	A1A2	<b>205</b>	<b>54</b>	0,08	0,16	<b>1172</b>	3,1	<b>2,1</b>	2,0	<b>1,9</b>	1,4	1,4	92
PAOMAYLON	<b>C</b>	NIVERNAIS	KINGSTON	A2A2	<b>184</b>	<b>64</b>	0,26	0,18	<b>1191</b>	2,4	<b>1,6</b>	1,5	<b>1,1</b>	1,4	1,5	92
PINKFLOYD	<b>S</b>	NEESKENS	ADAGIO-P	A1A2	<b>217</b>	54	<b>0,24</b>	<b>0,39</b>	490	3,4	2,5	1,9	<b>3,2</b>	1,8	1,7	92
PICKLAND	<b>C</b>	NANTAIS	LOUXOR	A2A2	<b>201</b>	67	<b>0,31</b>	<b>0,76</b>	772	2,2	1,7	0,8	<b>1,8</b>	1,3	1,2	92
PELFORTH	<b>C</b>	GARIDO	LOUXOR	A2A2	<b>198</b>	67	<b>0,25</b>	<b>0,03</b>	1063	3,2	2,5	1,5	<b>1,9</b>	0,7	2,1	92
PAVAROTTI	<b>C</b>	MERCUTIO	LESSON	A1A2	<b>187</b>	76	<b>0,37</b>	<b>0,39</b>	796	1,9	0,9	1,7	<b>1,9</b>	0,9	1,5	92
REMEMBER	<b>C</b>	NORBAY	SPARKLE ZA	A1A2	<b>182</b>	27	<b>0,08</b>	<b>0,08</b>	537	4,3	3,4	1,9	<b>2,0</b>	1,5	1,2	90
PLAYBACK	<b>S</b>	HOTSTAR	LEVIS	A1A2	<b>202</b>	51	<b>0,14</b>	<b>0,44</b>	799	2,1	1,5	<b>1,1</b>	1,7	<b>1,9</b>	1,6	91
POMPADOUR	C + S	GARIDO	SUPREME EN	A1A2	<b>202</b>	66	<b>0,27</b>	<b>0,32</b>	1066	2,2	2,0	<b>0,6</b>	1,7	<b>1,0</b>	0,9	93
PROTERRIL	<b>C</b>	SULEUS	SUPERHERO	A1A2	<b>200</b>	49	<b>0,15</b>	<b>0,40</b>	738	2,7	1,5	<b>1,6</b>	2,3	<b>1,6</b>	1,9	88
PERNOLD	<b>C</b>	HOTSTAR	LIWAY SIL	A2A2	<b>193</b>	61	<b>0,27</b>	<b>0,51</b>	605	2,6	1,6	<b>1,9</b>	1,3	<b>1,2</b>	1,9	89
PERIGORD P	C + S	ADLON P	SUPERSHOT	A1A2	<b>200</b>	48	0,13	0,07	<b>926</b>	2,3	2,2	<b>0,9</b>	2,5	<b>2,2</b>	1,6	<b>92</b>
PERITIO P	C + S	HANSA P	LOCKSTAR	A2A2	<b>191</b>	51	0,15	0,09	<b>1037</b>	2,4	2,1	<b>1,1</b>	1,9	<b>1,6</b>	2,1	<b>90</b>
PLACID	<b>C</b>	GARIDO	LIEPIN	A1A2	<b>192</b>	59	0,04	0,06	<b>1297</b>	3,0	2,4	<b>1,1</b>	0,9	<b>1,3</b>	1,2	<b>90</b>
PRIBAY P	<b>C</b>	OASIS P	KIRON	A1A2	<b>186</b>	43	0,01	0,07	<b>1072</b>	2,3	1,4	<b>0,9</b>	1,2	<b>2,2</b>	1,2	<b>93</b>
PROXY RED	C + S	SPARK RED	BRETAGNEDE	A1A1	<b>191</b>	48	<b>0,24</b>	<b>0,35</b>	372	2,9	2,3	1,8	<b>1,5</b>	2,1	1,0	91
PUYOL RED	C + S	GYWER	BRETAGNEDE	A1A2	<b>189</b>	68	<b>0,38</b>	<b>0,65</b>	641	1,5	1,0	1,2	<b>0,0</b>	1,3	2,0	91



**PACOLINE** is available in **sexed** semen. This son of DATELINE transmits a perfect combination of fitness, production and type. He provides a strong body, perfectly balanced and excellent feet and legs to ensure a good locomotion. Finally, he offers outstanding udders particularly functional and well-attached. Since his 3<sup>rd</sup> dam EDH IVORY VG-87, three generations have been flushed in our donor station and are still in production in the farm.



**PINKFLOYD** is coming in **sexed** semen. He is the #1 ISU already available. He brings many qualities to the breed. Indeed, he transmits a significant added-value through components. This NEESKENS son combines excellent components with exceptional health traits. He transmits udders with superb attachments, moderate size with lots of strength on perfect feet and legs.

**REMEMBER** is coming in **conventional** semen and is the TOP type sire of this April proof run. Sired by Regancrest Juror Brina EX-92 like the bulls GOLD CHIP or CAPITAL

GAIN, he stands out in France but also in Germany with +146 RZE and in Spain where he is #1 in type with +3,04. This NORBAY son lines up a pedigree with the best of the type. He transmits exceptional udders, a body with strength and perfect feet and legs.





**PLAYBACK** is available only in **sexed** semen. He is the new reference in grazing systems. This HOTSTAR son has an original pedigree with his dam, out of LEVIS (#1 ISU proven sires) on HADANGE. PLAYBACK brings a balanced production, a good combination of milking speed and udder health. His daughters will be particularly fertile thanks to a superb fertility trait. He transmits udders with excellent teat placement and a body with lots of width and strength.

**POMPADOUR** is also coming **conventional** and **sexed** semen. This incredible sire stands out in the international ranking. He is in the TOP 50 of Spain, England, Italy, Holland and is in the TOP 5 of Scandinavian countries. He comes from the renowned French strain of Naurine Gibbon EX-90 from which many AI sires also come from. He transmits incredible production traits and excellent fitness traits. He offers a controlled-size, ideal for grazing systems.

**PERITIO P** is available in **conventional** and **sexed** semen. He is the perfect ambassador of the AUTONOM segment. Indeed, he brings milk in quantity, superb health traits, and a particularly balanced type. He offers functional udders with excellent attachments. This son of the German sire HANSA P has an original pedigree that makes him easy to use in mating.



**PUYOL RED** is coming in **conventional** and **sexed** semen. He is the new reference in RED Holstein with a remarkable pedigree. Worthy heir of the famous cow Inouchka Ladd P Red VG-87, he also performs in PLI, PFT, NTM, etc. He transmits exceptional milk solids combined with a good fertility. His daughters will be particularly balanced with functional udders and strong feet and legs.

## **EVOLUTION STANDS OUT IN THE INTERNATIONAL RANKINGS**

→ A growing offer in US evaluation with **15 bulls > 2800 GTPI** whose 8 > 2900 GTPI (2908 GTPI in average). 10 of them are already available in **conventional** and / or **sexed** semen. This offer is completed with the **arrival of 6 new bulls available now**. See below.

*The bull RAINOW is currently in the TOP 50 GTPI bulls > 12 months with +2997 GTPI.*

→ A dense offer also in European evaluation with bulls that express themselves very well in several evaluation systems (ICO, PFT, PLI, NTM, RZG, PFI, etc.). See below.

## 6 NEW GTPI BULLS AVAILABLE

NAME	C/S	SIRE	MGS	BCAS	TPI	NM\$	Milk	P%	F%	SCS	DPR	PL	SCE	PTAT	UDC	FLC
<b>RING</b>	<b>C</b>	PURSUIT	MARIUS PRO	A1A1	<b>2953</b>	<b>777</b>	<b>1473</b>	0,06	0,19	2,63	<b>-1,2</b>	4,2	2,6	<b>1,43</b>	<b>0,99</b>	<b>0,12</b>
<b>PUMP</b>	<b>C + S</b>	ARISTOCRAT	GATEDANCER	A2A2	<b>2904</b>	<b>795</b>	<b>1708</b>	0,05	0,10	2,83	<b>-2,2</b>	4,6	2,2	<b>1,05</b>	<b>1,51</b>	<b>-0,63</b>
<b>PADDLE</b>	<b>C</b>	HEROIC	KENNEDY	A1A2	<b>2900</b>	<b>828</b>	<b>780</b>	0,07	0,28	2,89	<b>-0,7</b>	4,8	1,8	<b>0,65</b>	<b>0,89</b>	<b>0,93</b>
<b>PELEGRINO</b>	<b>C + S</b>	TOPNOTCHPR	ROUTER	A1A1	<b>2876</b>	<b>718</b>	<b>1432</b>	0,02	0,06	2,66	<b>0,4</b>	6,2	1,9	<b>1,72</b>	<b>1,76</b>	<b>0,38</b>
<b>PAOLO</b>	<b>C + S</b>	ARISTOCRAT	GATEDANCER	A2A2	<b>2824</b>	<b>687</b>	<b>1242</b>	0,05	0,13	2,98	<b>-1,1</b>	4,3	2,2	<b>1,44</b>	<b>1,88</b>	<b>-0,03</b>
<b>POMPADOUR</b>	<b>C + S</b>	GARIDO	SUPREME EN	A1A2	<b>2797</b>	<b>660</b>	<b>1076</b>	0,08	0,10	2,71	<b>0,1</b>	3,9	1,8	<b>0,67</b>	<b>1,00</b>	<b>0,60</b>



**RING** is coming in **conventional** semen. He comes from the foundation cow GBM BC Durham Annabell EX-90. This great son of PURSUIT transmits exceptional production traits. His daughters will produce a milk rich in fat and protein. RING provides healthy udders with strong attachments and well-placed teats. He offers a balanced body with lots of width and depth.



**PUMP** and **PAOLO** are both coming in **conventional** and **sexed** semen. These two brothers come from the renowned Bomaz Daggat D Pizza VG-87 family from which the sire ALTATOPSHOT also comes. They both provide incredibly high production, while maintaining a blameless level of A2A2 components. Their daughters will have long dairy careers and will have strong bodies and outstanding udders, extremely well attached. PUMP also stands out in German, English and Italian evaluation. This bull is therefore attractive in many countries.



**PADDLE** is available in **conventional** semen. This great son of HEROIC comes from the American family of Ladys-Manor Top Gun Gemini EX-93 from which the sires SHAMROCK and SHOW also comes from. This bull transmits a particularly modern and functional type with a controlled size and good ratio between stature and widths, which makes him totally adapted to grazing systems. He brings extremely high solids while maintaining a correct production level. His daughters will have long dairy careers, thanks to their well-designed udders and very good feet and legs.



**PELEGRINO** is coming in both **conventional** and **sexed** semen. He comes from the renowned cow Ammon-Peachey Shauna EX-92 which is one of the most successful transmitting cows in the breed. This cow is the dam to SUPERSIRE, SHAW, SARGEANT, PLATINUM, DIAMOND, HEADLINER and many more. He is brilliant in all the evaluation systems and he will leave his mark on future generations. PELEGRINO is impressing with his production level while combining excellent functional traits. He is perfectly balanced and ensures long dairy careers to his daughters. They will be fertile and productive with perfect udders. He transmits strong attachments and a good udder depth to last in the time. He transmits good feet and legs with healthy hoofs. Finally, he provides a balanced body with enough strength and width.

## EVOLUTION GENETICS STANDS OUT IN THE EUROPEAN RANKINGS



**PELLEGRINO** is in the TOP 20 with +161 RZG.

2 bulls in the TOP 100 B&W with **PERFECT** (+157 RZG) and **PUMP** (+156 RZG).

3 bulls in the TOP 100 R&W with **PINOT RED** (+153 RZG), **PUYOL RED** (+151 RZG) and **PERLAY RED** (+149 RZG).



3 bulls in the TOP 50 B&W with **POMPADOUR** (+317 NVI), **PEPPY** (+316 NVI) and **RIDER** (+316 NVI).

3 bulls in the TOP 50 R&W with **MANANA RED** (+307 NVI), **PUYOL RED** (+290 NVI) and **PERLAY RED** (+270 NVI).



2 bulls in the TOP 10 with **PINKFLOYD #3** (+5487 ICO) and **PERRY PK #6** (+5408 ICO).

5 bulls in the TOP 50 with **PELLEGRINO** (+5182 ICO), **POMPADOUR** (+5166 ICO), **PERFECT** (+5132 ICO), **PACOLINE** (+5130 ICO) and **RIJKAARD** (+5125 ICO).



**POULIDOR** and **PUMP** are **#2** with +150 PFI.

**PELLEGRINO** and **PINKFLOYD** are **#3** with +149 PFI.



**PELLEGRINO** is in the TOP 10 with +4668 GPFT.

4 bulls in the TOP 50 with **POMPADOUR** (+4525 GPFT), **PUYOL RED #1 RED** (+4522 GPFT), **PERFECT** (+4501 GPFT) and **POULIDOR** (+4495 GPFT).



**POMPADOUR** is in the TOP 5 with +39 NTM.

**PELLEGRINO** and **PUYOL RED** remains in the TOP 100 with +33 NTM.



**POMPADOUR** is in the TOP 20 with +848 PLI.

3 bulls in the TOP 50 with **POKEMON** (+822 PLI), **RING** (+809 PLI) and **PUMP** (+800 PLI).